

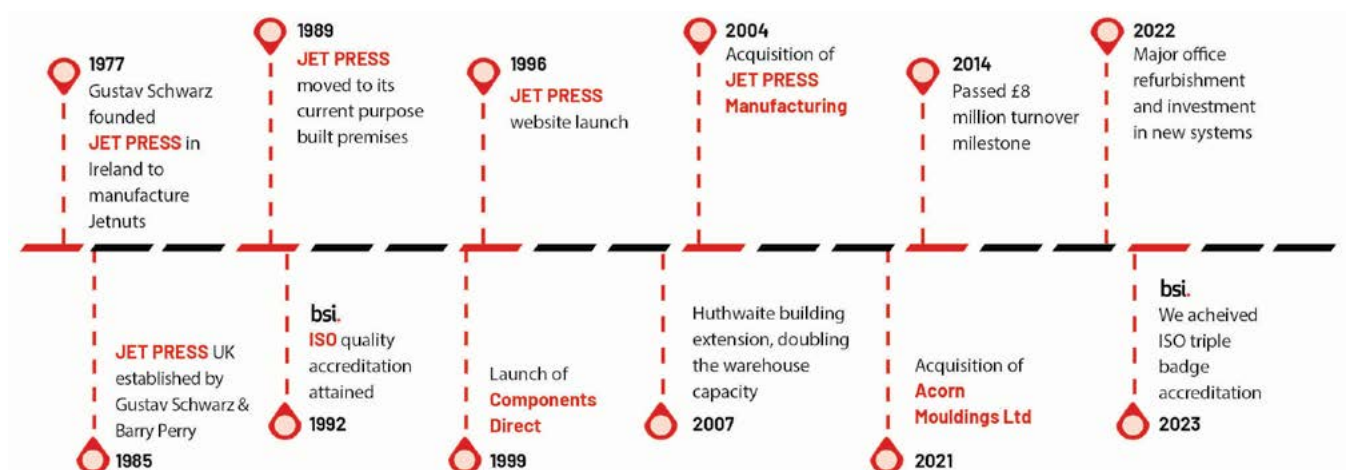
Who we are

JET PRESS is a leading global supplier of value-engineered solutions and components. We manufacture, build and assemble engineered fasteners, components and hardware.

Through our global supply chain and in-house engineering and development expertise, we help lower the risk, cost and complexity of our customers' supply chains.

Our business was founded in 1977 and remains under the original family ownership, with a member of the second generation actively involved in the business today. We're committed to ethically delivering long-term benefits for our colleagues, community, customers and suppliers alike.

Many of our colleagues have built a wealth of industry experience over many years with the company. We've grown together from being a local supplier based in Nottinghamshire to having a presence in 50 countries all over the World. We have a subsidiary in Germany and manufacturing facilities in Derbyshire and Buckinghamshire.



Long term success

Success over the last 40 years has been delivered by the people at the heart of our business. The relationships they've established and nurtured is why we exist and why we're different. We're in it for the long-term, as a partner in the success stories of our customers and suppliers alike. Our business, any business is people.

Experienced team of engineers

Our experienced team of engineers are here to support application specific enquiries. If we don't have a component suitable for your requirement we'll source it. If we can't source it we'll use our technical expertise and manufacturing capabilities to develop a bespoke solution for you.





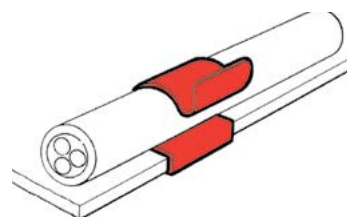
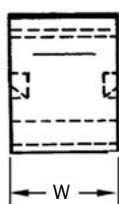
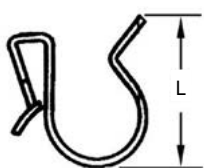
Cable Edge Clips - Standard

These popular and cost-effective clips are used throughout industry to hold pipes or cables onto panel edges.

Installation is simple. A light tap fastens the clip securely to the panel, so no special installation tools are required. The pipe or cable can then be inserted and removed as necessary without removing the clip from the panel.

Typical applications include motor vehicles, domestic appliances, electrical equipment, boats and caravans.

Material - Austempered Carbon Steel.



D	P	L	W	Part Number
3.2	0.6 - 1.2	14.3	12.7	CAC264
4.8	1.8 - 2.8	12.7	12.7	CAC674
5.6	0.2 - 1.6	17.5	12.7	CAC675
6.1	0.5 - 1.2	12.3	12.7	CAC676
6.2 - 6.4	0.8 - 1.2	11.9	12.7	CAC551
6.2 - 6.4	1.7 - 2.3	11.9	12.7	CAC265
6.2 - 6.4	0.6 - 1.2	11.9	12.7	CAC741
6.4	0.6 - 1.2	12.7	12.7	CAC677
6.4	2.0 - 4.2	11.3	12.7	CAC535
6.4	4.8 - 7.1	15.9	12.7	CAC267
7.3	0.6 - 1.2	13.5	12.7	CAC742
7.9	1.0 - 1.6	20.8	13.0	CAC268
8.0	0.6 - 1.2	13.0	12.7	CAC269
8.2	1.8 - 2.4	12.3	12.7	CAC270
9.0 - 9.5	2.9 - 3.5	12.7	12.7	CAC538
9.1	1.0 - 2.4	14.3	12.7	CAC272
9.5	2.2 - 2.8	20.0	12.7	CAC743
9.7	1.0 - 1.6	14.3	12.7	CAC273
9.8	0.5 - 0.9	14.3	12.7	CAC274
10.0	0.6 - 1.3	14.3	12.7	CAC496
11.1	0.6 - 1.2	15.0	12.7	CAC275
11.1	1.6 - 2.4	15.0	12.7	CAC744
13.0	0.7 - 1.1	19.8	12.7	CAC491
13.8 - 14.3	0.7 - 1.2	20.6	12.7	CAC277
31.8	0.5 - 1.2	32.8	14.3	CAC289



Flared



Removable

Cable Edge Clips - Flared & Removable

These popular and cost-effective clips are used throughout industry to hold pipes or cables onto panel edges.

Installation is simple. A light tap fastens the clip securely to the panel, so no special installation tools are required. The pipe or cable can then be inserted and removed as necessary without removing the clip from the panel.

The flared design helps to minimise the effects of chafing on cables or pipes where vibration or movement could cause damage.

The removable feature allows the clip to be quickly and easily released from the panel edge, offering easy access or for recycling purposes.

Material - Austempered Carbon Steel.



Flared

D	P	L	W	Part Number
6.3 - 7.2	1.0 - 1.5	17.5	12.7	CAC266
8.0	0.4 - 0.9	18.5	12.7	CAC544
12.7	1.4 - 1.9	19.8	12.7	CAC745
13.0	0.6 - 0.9	19.8	12.7	CAC276
15.9	1.4 - 2.0	19.8	12.7	CAC542
16.0	0.7 - 2.1	20.0	12.7	CAC546

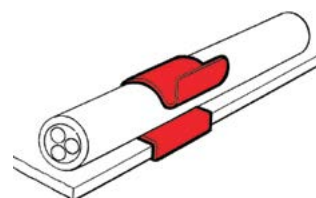
Vist jetpress.com, to see our full range



Removable

D	P	L	W	Part Number
5.0 - 6.0	0.6 - 0.9	11.9	15.0	CAC497
8.0	0.9	11.0	15.0	CAC539
8.0	3.0 - 4.5	25.0	15.0	CAC548

Vist jetpress.com, to see our full range





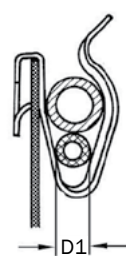
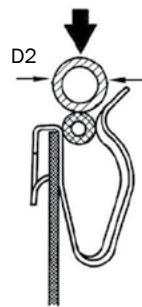
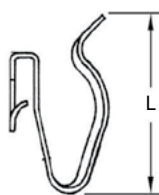
Cable Edge Clips - Double

These clips are designed to hold two cables or pipes to panels without pre-drilling, allowing components to be removed without unclipping. They are ideal for use where electrical equipment or pipes have to be fitted.

Some of these clips have radiused edges, making them particularly suitable for retaining insulated cables without chafing.

Typical applications include motor vehicles, domestic appliances, boats, machinery and electrical equipment.

Material - Austempered Carbon Steel.



D1	D2	P	L	W	Part Number
2.4	5.6	0.2 - 1.6	17.5	12.7	CAC675
2.4	5.6	1.0 - 1.6	17.6	12.7	CAC266
2.5	2.5	3.5	21.2	12.7	CAC242
3.2	3.2	2.0 - 4.0	16.3	12.7	CAC243
3.6	3.6	0.6 - 1.6	19.5	12.7	CAC245
3.6	3.6	1.1 - 2.0	18.5	12.7	CAC246
3.6	3.6	1.2	14.8	12.7	CAC678
3.6	3.6	1.6	15.5	12.7	CAC247
4.0	4.0	0.7	15.7	9.5	CAC248
4.0	4.0	1.1	14.2	9.5	CAC249
4.0	4.0	1.2	15.9	9.5	CAC250
4.0	4.0	2.0	16.4	9.5	CAC252
4.8	4.8	0.6 - 4.5	20.9	12.7	CAC253
4.8	4.8	0.6 - 4.5	20.9	12.7	CAC536
4.8	4.8	2.0 - 4.0	16.3	12.7	CAC255
6.0	8.0	2.0 - 2.5	19.8	12.7	CAC163
6.3	9.5	0.2 - 1.3	21.5	12.7	CAC196
6.3	9.5	4.8 - 7.1	19.8	12.5	CAC257
6.4	6.4	0.9 - 1.2	15.9	7.9	CAC262
6.4	6.4	1.0 - 1.6	19.0	12.7	CAC258
8.0	8.0	0.6 - 1.6	28.6	12.7	CAC260
8.0	8.0	4.0	21.8	12.7	CAC545
8.0	10.4	0.2 - 1.2	23.6	12.7	CAC261

Vist jetpress.com, to see our full range





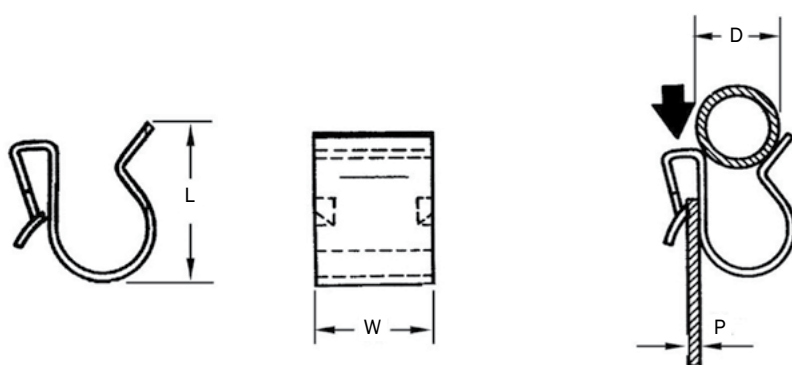
Cable Edge Clips - Heavy Duty

Heavy Duty Cable Edge Clips have more barbs than standard clips to secure pipes and cables more firmly.

Installation is simple. A light tap fastens the clip securely to the panel, so no special installation tools are required. The pipe or cable can then be inserted and removed as necessary without removing the clip from the panel.

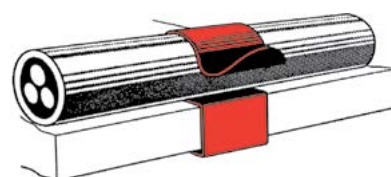
Typical applications include electrical contracting, heavy goods vehicles and machinery.

Material - Austempered Carbon Steel.



P	D	W	L	Part Number
2 - 4	6 - 7	14	14.3	CAC316
2 - 4	8 - 9	14	15.9	CAC317
2 - 4	10 - 11	14	19.0	CAC318
2 - 4	12 - 14	14	21.4	CAC319
2 - 4	15 - 19	14	23.0	CAC320
2 - 4	20 - 24	14	27.8	CAC321
2 - 4	25 - 30	14	30.9	CAC322
4 - 7	6 - 7	14	14.3	CAC323
4 - 7	8 - 9	14	15.9	CAC324
4 - 7	10 - 11	14	22.4	CAC325
4 - 7	12 - 14	14	21.4	CAC326
4 - 7	15 - 19	14	23.0	CAC327

Vist jetpress.com, to see our full range





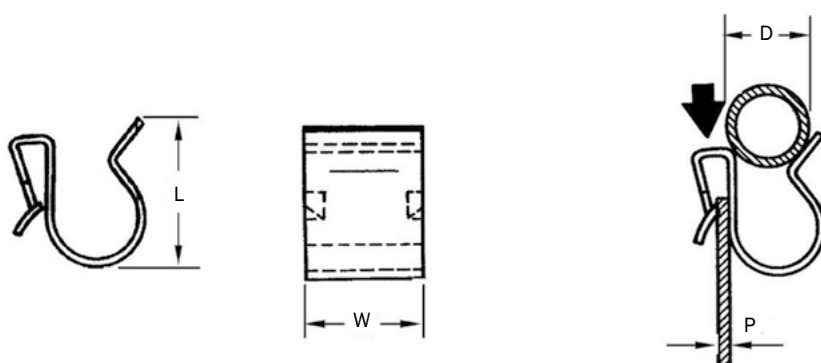
Cable Edge Clips - Heavy Duty Flared

The design of Heavy Duty Flared Cable Edge Clips reduces chafing to reduce the likelihood of damage to pipes and cables. In applications like machines and vehicles where there is movement or vibration, this is a valuable feature. Once the clip is attached the pipe or cable can be inserted or removed as required.

Installation is easy. All that is required is a tap with a hammer - no specialist tools are required.

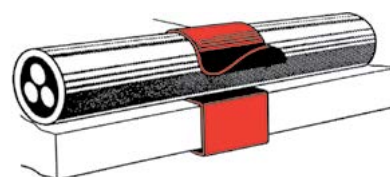
Typical applications include construction, electrical contracting, machinery, heavy goods vehicles.

Material - Austempered Carbon Steel.



P	D	W	L	Part Number
2 - 4	10 - 11	14.0	19.0	CAC492
2 - 4	12 - 14	14.0	21.4	CAC493
2 - 4	15 - 19	14.0	23.0	CAC373
2 - 4	20 - 24	14.0	27.8	CAC374
4 - 7	10 - 11	14.0	22.4	CAC899

Visit jetpress.com, to see our full range





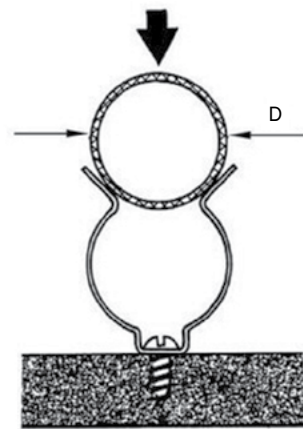
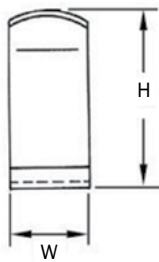
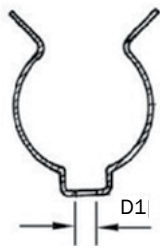
Tool Clips

This range of fasteners is designed to rotate through 360° to allow pipes or cables to follow their natural contour without vibration or chafing. The central mounting hole allows rivet or screw fixing. The stand-off base configuration isolates the fixing head from the retained cable or pipe.

These fasteners can be fixed together at their base to form a Swivel Type In-Air Cable and Pipe Clip.

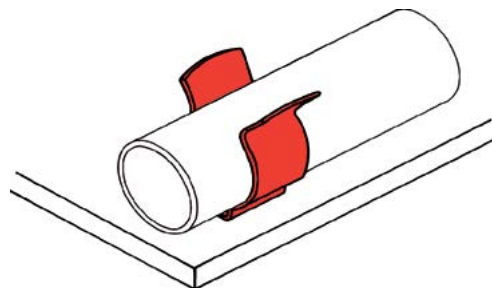
Typical applications include agricultural equipment, motor vehicles, domestic appliances, plumbing and electrical contracting.

Material - Austempered Carbon Steel.



D	D1	H	W	Part Number
12.0 - 13.0	5.0	21.3	19.0	CAC284
13.0 - 16.0	5.0	20.6	19.0	CAC285
17.0 - 20.0	5.0	23.8	19.0	CAC286
21.0 - 25.0	5.0	27.8	19.0	CAC287
26.0 - 30.0	5.0	32.6	20.0	CRF038

Vist jetpress.com, to see our full range





Fir Tree Cable and Pipe Clips – Single

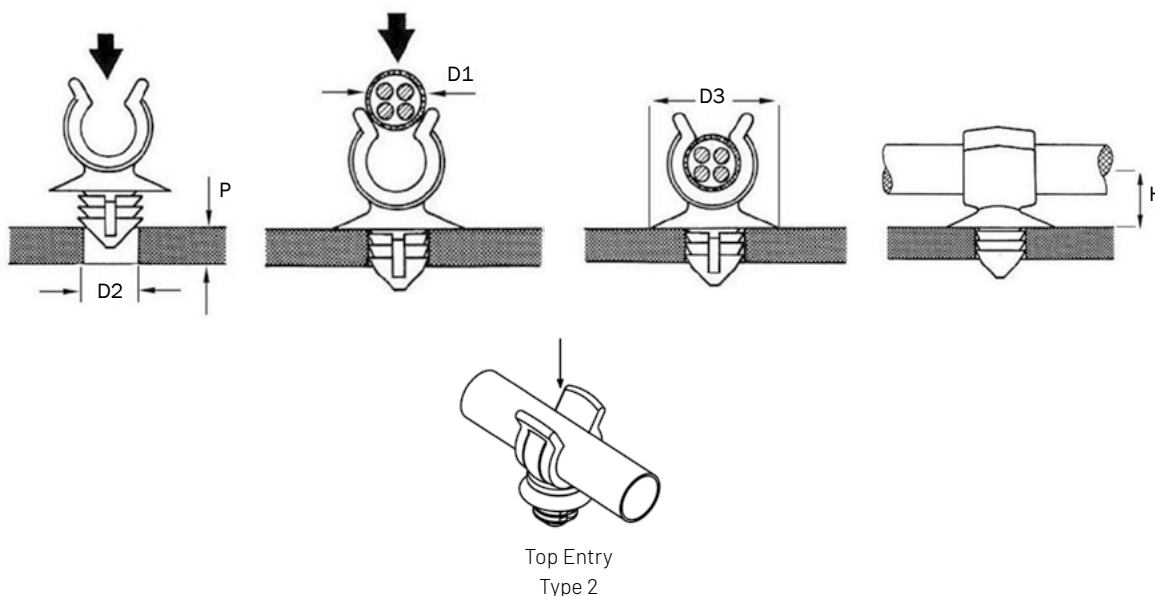
These fasteners are suitable for use in various applications where cables or pipes need securing, with the fir tree nose-form enabling them to be inserted into a wide range of panel thicknesses.

Along with the Top Entry clips listed in the table below, we can also offer Side Entry or a range of Top Locking versions, which are suited to applications where there is a risk of the pipe being forced out of the clip due to vibration or movement.

Typical applications include agricultural equipment, motor vehicles, domestic appliances, electrical equipment, boats, furniture and garden equipment.

Materials – Acetal or Nylon.

Typical Colours – Black, Natural.



D1	D2	P	D3	H	Type	Part Number
8.0	8.0 / M10	1.6 - 5.5	16.0	11.4	2	CAC702
9.0	6.0	2.8	17.5	11.0	2	CAC298
10.0	7.0 / M8	1.5 - 8.0	No skirt	8.3	2	CAC329
12.0	8.0	1.6 - 5.5	16.0	11.7	2	CAC696
15.0	8.0 / M10	1.6 - 5.5	16.0	13.2	2	CAC697

Vist jetpress.com, to see our full range





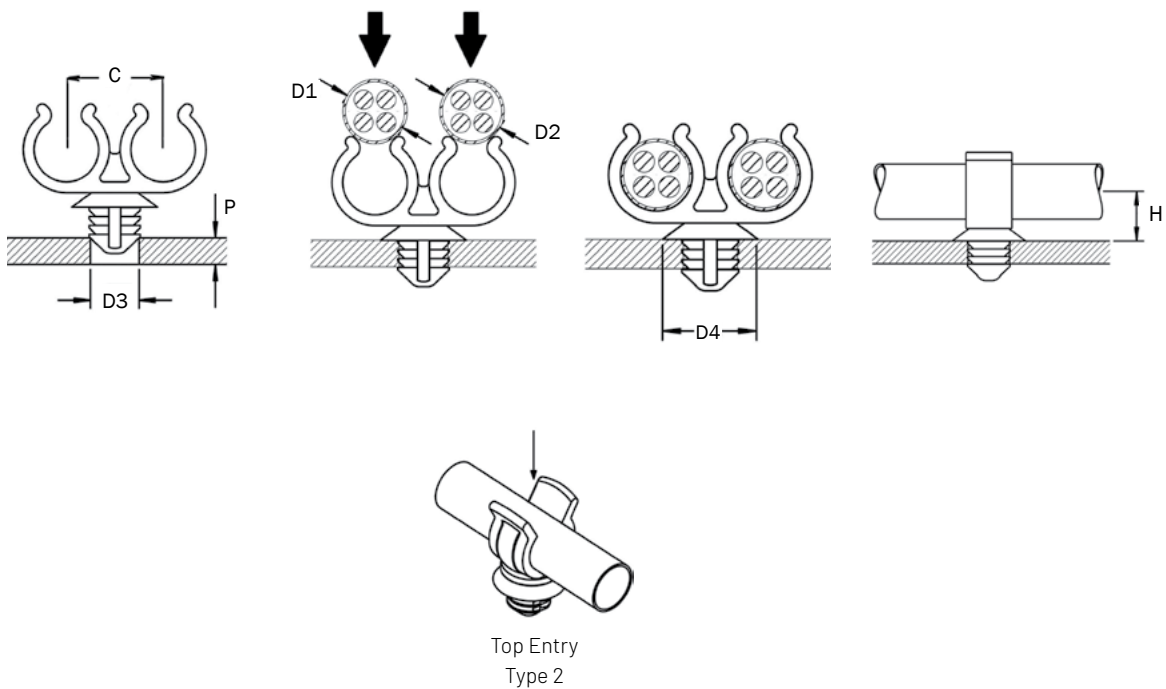
Fir Tree Cable and Pipe Clips - Double

These Double Fir Tree Cable Clips or pipe clip fasteners are suitable for various applications where a combination of cables or pipes need securing to each other. The fir tree nose-form on these clips enables them to be inserted into a wide range of panel thicknesses.

Typical applications include agricultural equipment, motor vehicles, domestic appliances, electrical equipment, boats, furniture and garden equipment.

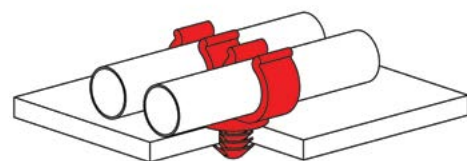
Materials - Acetal or Nylon.

Typical Colours - Black, Natural.



D1	D2	D3	P	D4	H	C	Type	Part Number
6.0 - 8.0	6.0 - 8.0	8.0	0.7 - 8.0	22.4	8.0	11.0	2	PIC033
6.1	9.3	8.0	0.7	22.4	9.0 - 11.1	12.5	2	CAC748
8.0	8.0	6.8	1.0	18.0	-	11.9	2	CAC553

Vist jetpress.com, to see our full range





W Button Cable and Pipe Clips - Single

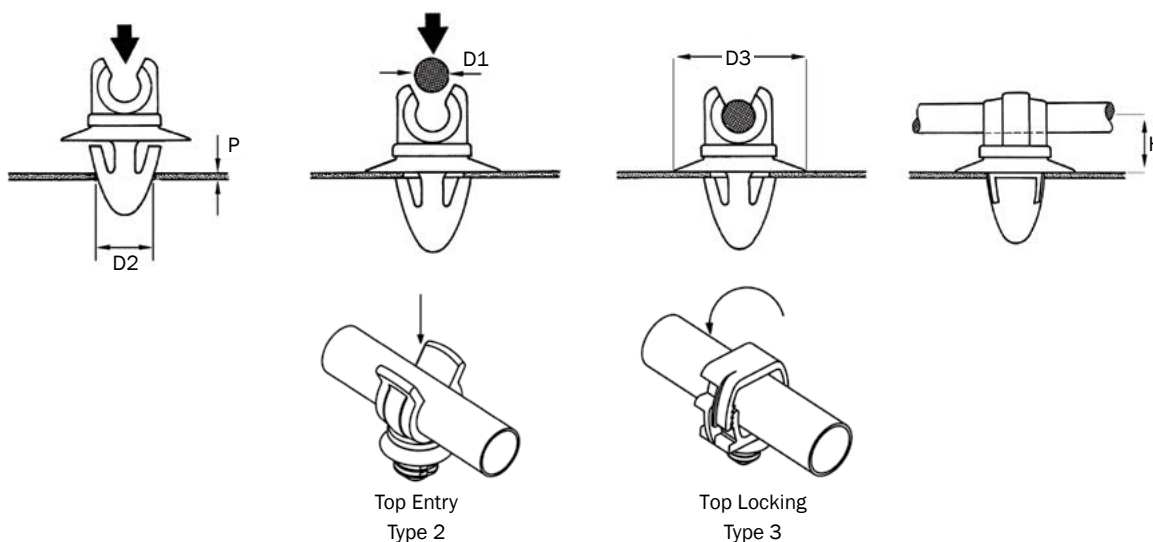
These push-in W Button Clips are ideal for use wherever cables and pipes have to be installed and fitted onto a panel.

The table below shows top entry and top locking pipe orientation, however we offer side entry. Top Locking versions are suited to applications where there is a risk of the pipe being forced out of the clip due to vibration or movement.

Typical applications include motor vehicles, garden equipment, domestic appliances, machinery and boats.

Materials - Acetal, Nylon.

Typical Colours - Black, Natural.



D1	D2	P	D3	H	Type	Part Number
2.8	2.8	0.9 - 1.2	3.0 x 3.8	2.3	2	CAC293
3.5	7.9	0.7 - 1.0	16.3	5.0	2	CAC237
4.8	7.8 - 7.9	0.7 - 1.0	16.3	7.3	2	CAC892
4.8	8.0	0.8 - 2.0	15.6	7.7	2	CAC893
4.8	8.0	1.0 - 3.5	7.7 x 30.0	12.7	2	CAC190
5.2	7.9	0.7 - 2.0	22.4	9.0	2	CAC195
6.4	7.9	0.8 - 2.0	16.0	8.6	2	CAC188
7.9	8.0	0.8 - 2.0	15.6	9.6	2	CAC240
8.7 - 9.3	8.0	3.8 - 4.4	17.5	10.0	3	CAC773
9.3	7.9 - 8.0	1.0 - 3.5	7.7 x 30.0	8.2	2	CAC191
12.7	8.0	3.3	16.3	11.5	2	CAC189

Vist jetpress.com, to see our full range



SCAN
ME!



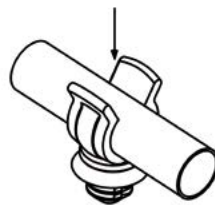
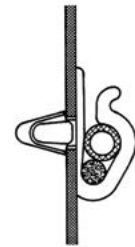
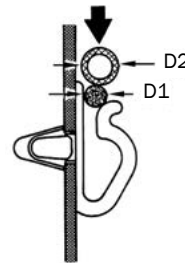
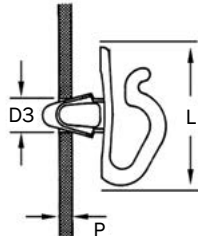
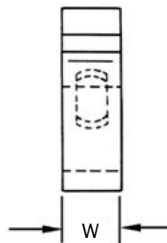
W Button Cable and Pipe Clips - Multi

This range of Multi W Button Cable Clips is designed to be pushed into pre-punched or drilled holes. They will hold cables and pipes securely. Pipe entry orientation options are available as shown.

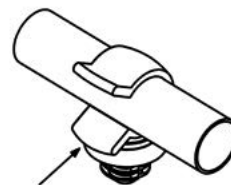
Typical applications include motor vehicles, railway rolling stock, electrical equipment, garden equipment and boats.

Materials - Acetal, Nylon.

Typical Colours - Black, Natural.



Top Entry
Type 1



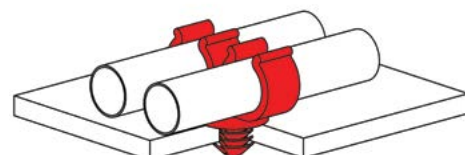
Side Entry
Type 2

D1	D2	D3	P	L	W	Type	Part Number
3.2	4.8	5.0	0.5 - 0.7	18	6.0	2	CAC388
4.8	4.8	7.9	0.7 - 1.0	17.0	8.5	1	CAC335
6.0	6.0	8.0	1.0 - 3.5	30	10.0	1	CAC389
6.4	6.4	7.8	0.7 - 2.0	20	16.0	1	CAC390
7.9	7.9	7.8	0.7 - 2.0	22	13.0	1	CAC391
9.0	9.0	8.0	1.0 - 3.5	30	7.7	1	CAC392
12.0	12.0	7.9	1.0 - 3.5	30	7.7	1	CAC193

Vist jetpress.com, to see our full range



SCAN
ME!





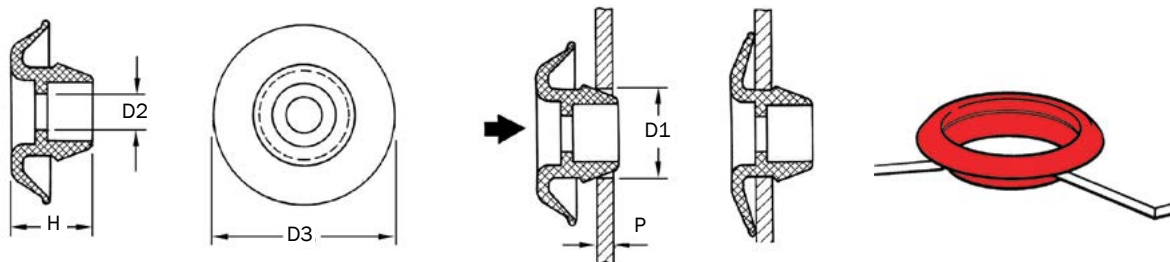
Grommets - Self-Sealing

Self-Sealing Grommets are ideal for use in oily and greasy environments, snapping into round holes without the use of special tools. They can be removed and re-used as required.

Typical applications include motor vehicles, domestic appliances, electrical equipment, fascia panels and telecom equipment.

Material - Polythene.

Typical Colours - Natural, Black.



D1	P	D2	D3	H	Part Number
12.7	0.9 - 1.5	8.7	23.8	9.1	GR0026
19.0	0.9 - 1.5	15.1	31.0	9.1	GR0074
22.2	0.9 - 1.5	18.2	32.5	9.1	GR0075
25.4	0.9 - 1.5	21.4	35.7	9.1	GR0077
31.8	0.9 - 1.5	27.8	42.0	9.1	GR0076

Vist jetpress.com, to see our full range



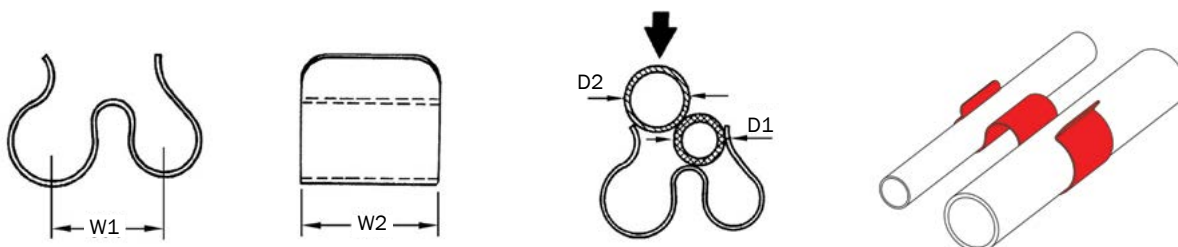
In-Air Cable and Pipe Clips

A useful range of fasteners designed to hold pipes, cables or tubular components to any other pipe or cable running in parallel. Clipping the components together avoids vibration or chafing.

The Metal In-Air Clip is particularly suitable for use in high temperature environments. The illustrations show a typical style but designs may vary slightly.

Typical applications include motor vehicles, domestic appliances, electrical equipment, machinery, railway rolling stock and boats.

Material - Austempered Carbon Steel.



D1	D2	W1	W2	Part Number
6.0	8.0	11.5	12.0	IAC033
6.4	6.4	12.0	12.0	IAC018
8.0	8.0	12.1	12.7	IAC034

Vist jetpress.com, to see our full range



In-Air Cable and Pipe Clips

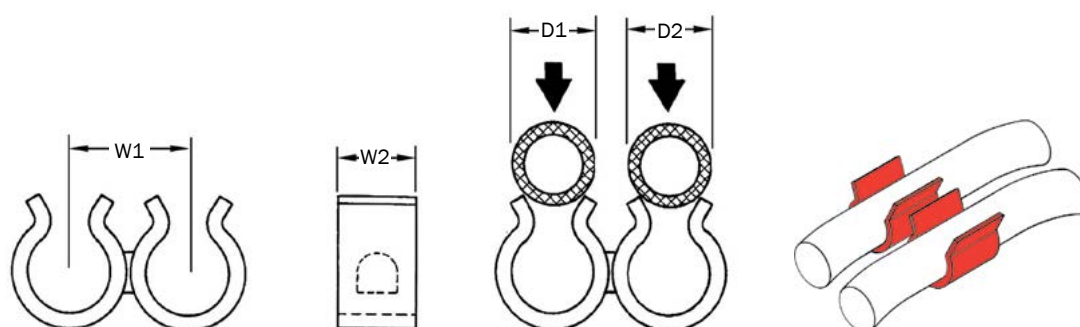
A range of fasteners designed to hold pipes, cables or tubular components to any other pipe or cable running in parallel. Clipping the components together avoids vibration or chafing.

Plastic In-Air Clips are particularly suitable for high humidity locations.

Typical applications include motor vehicles, domestic appliances, electrical equipment, machinery, boats, railway rolling stock and industrial catering equipment.

Material - Nylon.

Typical Colour - Black.



D1	D2	W1	W2	Part Number
4.8	4.8	17.4	9.5	IAC029
4.8	6.4	17.5	9.5	IAC056
6.0	6.0	16.0	10.0	IAC030
8.0	8.0	11.0	10.0	IAC035A
9.5	9.5	17.1	15.0	CAC308
16.0	16.0	24.0	12.0	IAC039

Vist jetpress.com, to see our full range

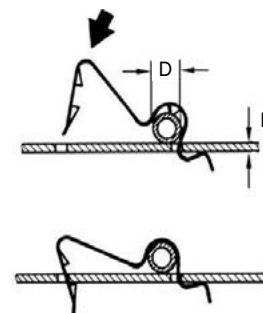
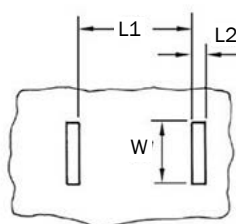
Armoured Control Cable Clips



A great solution for holding armoured cables firmly in place, but these cable clips can also be easily released for re-use or when servicing is required.

Typical applications include motor vehicles, agricultural equipment and machinery.

Material - Austempered Carbon Steel.



D	P	L1	L2	W	Part Number
6.4	1.8 - 2.5	17.3	3.0	10.3	ACC019

Vist jetpress.com, to see our full range



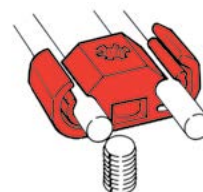
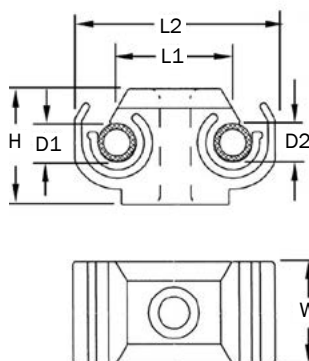
5mm Weld Stud Cable and Pipe Clips

These fasteners are ideal for securing cables or pipes to industry standard 5mm weld studs. They can also be screwed onto a panel if required. Please request samples as styles may differ from those shown.

Typical applications include motor vehicles, domestic appliances, wiring harness, electrical equipment.

Material - Various - please contact our sales department.

Typical Colours - Black, Natural.



D1	D2	L1	L2	H	W	Part Number
6.0 - 8.0	6.0 - 8.0	20.0	34.2	28.5	13.0	CAC386
8.0	8.0	19.5	36.5	16.0	13.0	CAC387

Vist jetpress.com, to see our full range



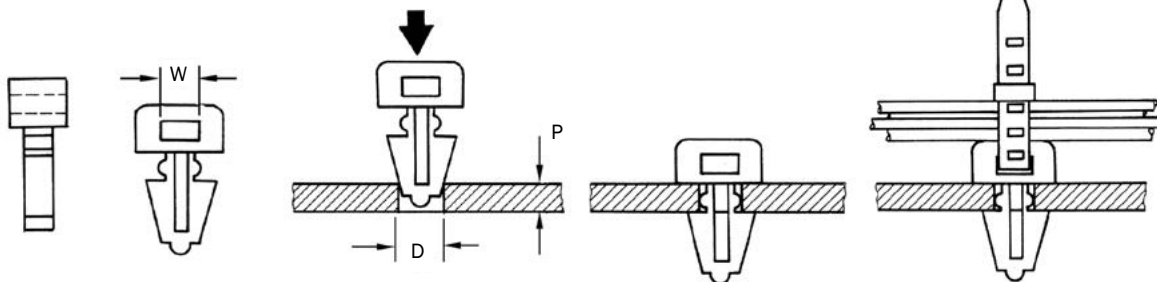
Push-In Cable Tie Mounting Bases

These Push-In Mounting Bases are intended for use in pre-drilled holes and provide a fixing for cable ties up to 8mm wide. Once inserted through or into the hole, the mounting base is locked into place.

Typical applications include wiring installations, domestic appliances, electrical equipment, telephone systems, computers and motor vehicles.

Material - Nylon.

Typical Colours - Natural, Black.



W	D	P	Part Number
7.0	6.0	0.9 min	CAT174

Vist jetpress.com, to see our full range



Cable and Pipe Clip Retainers

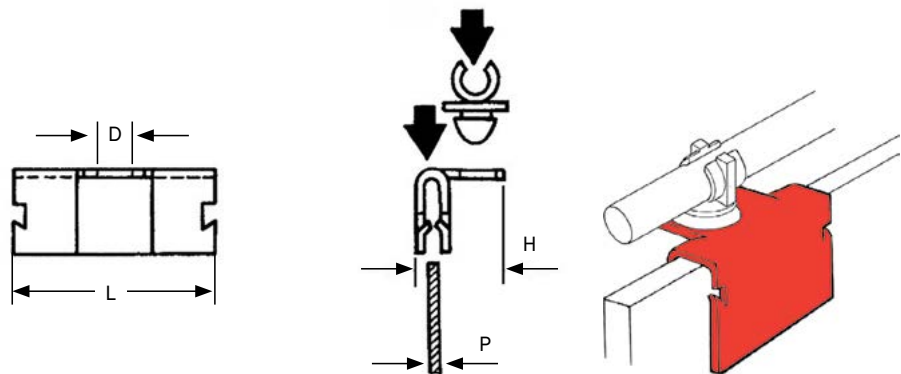
Designed to fasten to any convenient metal flange to hold a Grommet or, alternatively, a Fir Tree or W Button type Cable/Pipe Clip.

When used in this way, the combination of the two fasteners provides an insulated stand-off position allowing pipe runs to follow a natural contour without chafing.

CCR040 has no barbs and therefore removable.

Typical applications include electrical equipment and domestic appliances.

Material - Austempered Carbon Steel.



P	D	H	L	Part Number
1.0 - 2.0	9.6	22.3	32.0	CCR040
1.6 - 2.5	6.3	14.0	29.0	CCR044



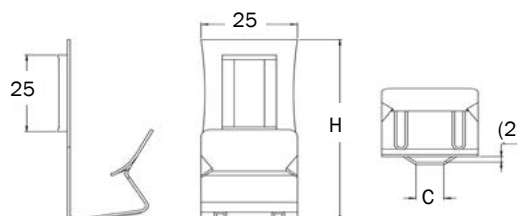
Edge-Fitting Cable Tie Bases

These Edge-Fitting Cable Tie Bases accommodate Cable Ties of up to 4.8mm wide, and the two entry points allow the Cable Tie to be mounted along the panel or at 90° to the panel edge.

C = Maximum Cable Tie width

P = Panel thickness

Typical applications include solar panels, domestic appliances, electrical equipment, boats, motor vehicles and caravans.



P	H	C	Part Number
5.0 - 9.55	47.0	8.0	CAT447
13.0 - 18.0	60.0	8.0	CCR036

Vist jetpress.com, to see our full range



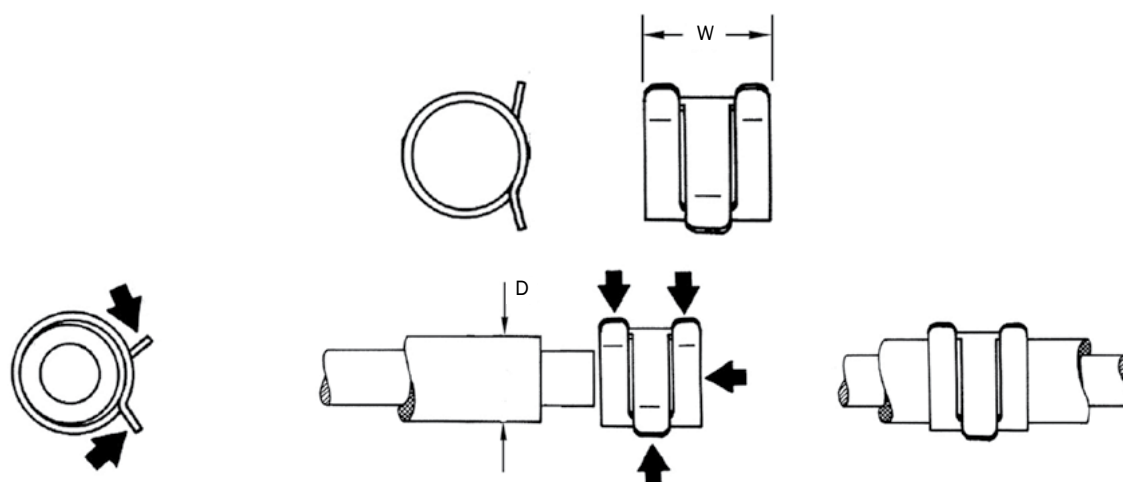
Spring Steel Hose Clamps

Spring Steel Hose Clamps are designed for the retention of low pressure, light duty hoses. As the hose relaxes, so the Hose Clamp compensates by maintaining its pressure on the assembly. To assemble, remove or re-position, simply use the appropriate hand tool.

In view of the variation of shore hardness between hoses, we recommend that pull-off tests are carried out before a particular Clamp is specified.

Typical applications include cars, heavy goods vehicles, air conditioning and agricultural equipment.

Material - Austempered Carbon Steel.



D	W	Part Number
9.5 - 10.5	9.5	HOB159
10.4 - 11.4	8.0	HOB993
10.5 - 12.5	14.5	HOB160
11.0 - 12.2	8.0	HOB161
12.5 - 13.5	14.5	HOB162
12.5 - 13.6	8.0	HOB163
13.5 - 15.0	8.0	HOB164
14.0 - 15.0	14.5	HOB990
15.0 - 17.0	12.0	HOB171
18.1 - 20.0	8.0	HOB166
18.1 - 20.0	14.0	HOB167
19.0 - 21.0	14.0	HOB991
19.5 - 22.0	8.0	HOB170

Vist jetpress.com, to see our full range





Female



Male

T-Stud Swivel Clips

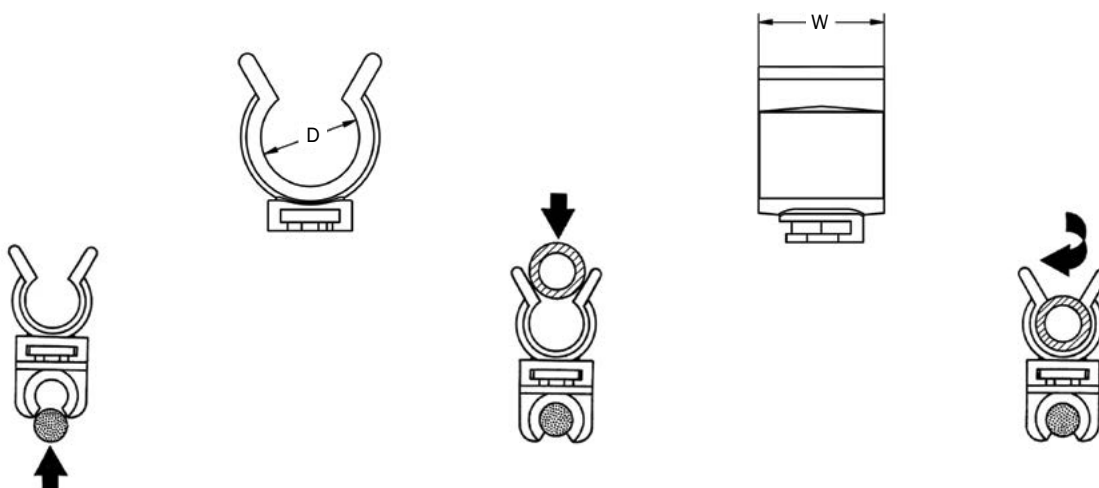
Designed to swivel through 360°, these clips hold two pipes, cables or tubular components together. Vibration is reduced by clamping the pipes or cables, and the small fixed spacer between the two retainers eliminates chafing.

The swivel action allows the pipes or cables to follow their natural contour and the clip can be easily removed, re-positioned and re-used during servicing.

Typical applications include motor vehicles, domestic appliances, electrical equipment, boats and machinery.

Material - Acetal.

Typical Colour - Black.



Female

D	W	Part Number
4.7	8.5	CSC068
6.3	9.5	CSC125
12.0	15.0	CSC127
22.0 - 24.0	15.0	CAC331

Vist jetpress.com, to see our full range

Male

D	W	Part Number
12.0	15.0	CSC295
22.0 - 24.0	15.0	CSC070

Vist jetpress.com, to see our full range





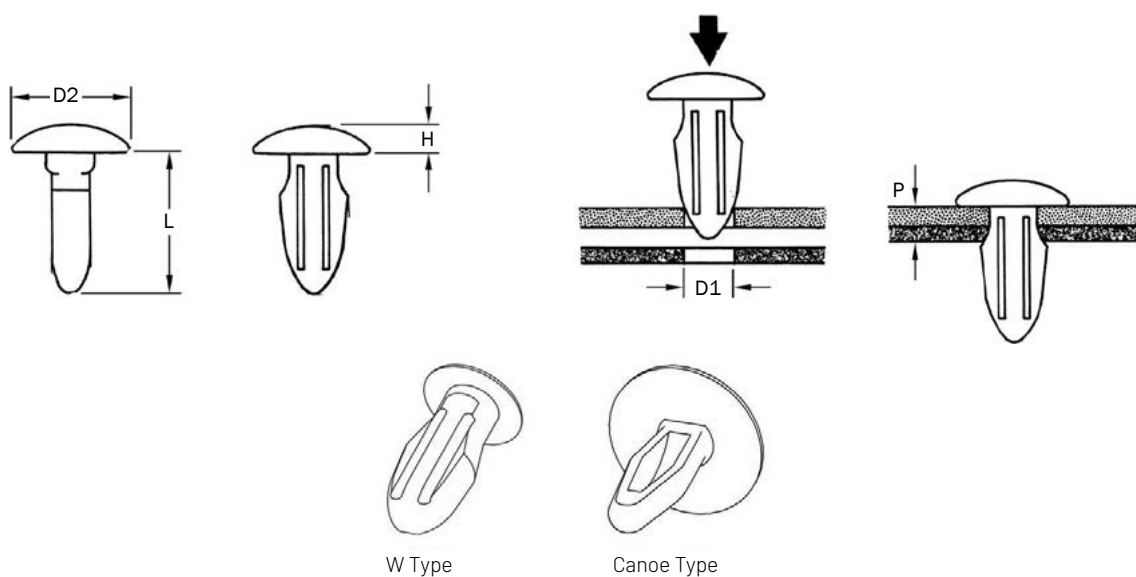
W Buttons

W Button fasteners are designed to secure sheet materials to secondary panels and can also be used to hold components to panels. The button is pushed through the aligning panel holes, contracting on entry and then relaxing to secure the two panels firmly together.

Typical applications include motor vehicles, domestic appliances, furniture, aerospace and caravans.

Material - Acetal.

Typical Colours - Black, Natural.



D1	P	L	D2	H	Type	Head	Part Number
3.0	4.3	11.2	4.6	1.8	W	Plain	WBU032
3.2	1.8	8.4	9.5	1.6	W	Plain	WBU030
3.2	3.0	9.7	4.6	1.8	W	Plain	WBU034
3.5	0.9 - 4.0	11.1	10.3	2.5	Canoe	Plain	WBU004
3.5	2.9 - 6.5	10.7	9.1	2.3	W	Plain	WBU043
3.8 - 4.1	1.6 - 3.2	9.7	6.9	1.3	W	Plain	WBU044
3.8 - 4.1	1.6 - 3.2	9.9	9.4	1.5	W	Plain	WBU045
3.8 - 4.1	3.2 - 4.8	11.4	6.9	1.3	W	Plain	WBU046
4.6 - 4.9	3.2 - 4.8	13.0	9.4	1.5	W	Plain	WBU048
5.0	4.9	11.5	9.4	1.5	W	Plain	WBU049
5.4 - 5.6	1.6 - 3.2	12.2	9.4	1.5	W	Plain	WBU050
5.4 - 5.7	3.2 - 4.0	13.5	9.4	1.5	W	Plain	WBU056
6.0	4.5	12.0	15.8	1.5	W	Grained	WBU037
6.0	9.6	17.3	15.7	2.0	W	Grained	WBU038
6.2 - 6.5	1.6 - 3.2	13.7	12.5	1.5	W	Plain	WBU051
7.0 - 7.3	1.6 - 3.2	13.7	14.0	2.3	W	Plain	WBU069
7.1	3.2 - 4.8	15.2	14.2	2.3	W	Grained	WBU052

Vist jetpress.com, to see our full range



Fir Tree Buttons

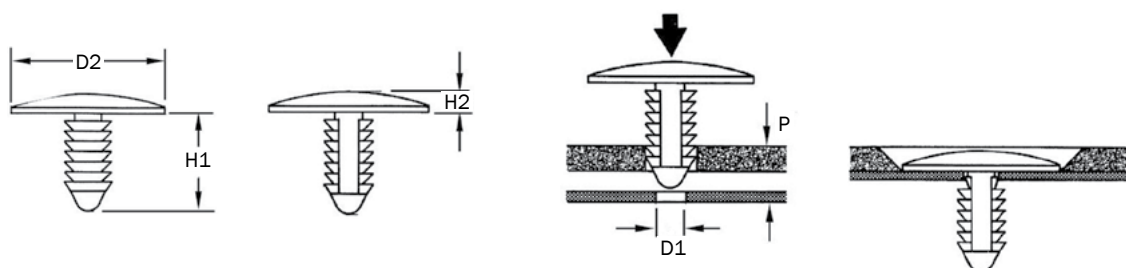
This range of push-in Fir Tree Buttons is designed to secure two panels together or for holding components to panels. Simple and quick to install, the button contracts on entry and then relaxes to secure the two panels.

Fir Tree Buttons are used extensively to secure trims in the automotive industry and have many other applications in domestic appliances and electrical equipment.

Typical applications include motor vehicles, domestic appliances, caravans, office and upholstered furniture.

Material - Nylon.

Typical Colours - Black, Grey.



D1	P	D2	H1	H2	Head	Part Number
4.0	0.8 - 5.9	9.1	11.0	1.5	Matt	FTB046
5.0	1.2 - 6.0	16.0	11.0	2.0	Matt	FTB064
5.0	1.5 - 11.0	11.0	17.8	1.0	Plain	FTB067A
5.0	1.7 - 8.0	11.0	12.7	1.0	Plain	FTB150
5.0	2.5 - 12.5	15.0	17.8	1.5	Plain	FTB151
6.0	3.0 - 8.0	16.0	15.0	2.0	Grained	FTB017
6.0	3.9 - 8.0	16.0	12.0	2.0	Grained	FTB178
6.4	0.9 - 15.0	12.7	21.0	2.5	Grained	FTB148
7.0 - 7.4	0.7 - 11.0	18.0	22.1	2.0	Matt	FTB156
7.0 - 7.4	0.7 - 20.0	18.0	27.3	2.0	Matt	FTB022
7.0 - 7.4	0.7 - 20.0	30.0	35.0	2.0	Matt	FTB095
7.2	3.0 - 10.0	14.0	16.0	2.0	Plain	FTB060
7.2	3.0 - 16.0	16.0	22.0	2.0	Matt	FTB061
8.0	3.2 - 7.5	21.0	13.4	2.0	Grained	FTB030

Vist jetpress.com, to see our full range



SCAN
ME!



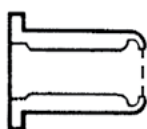
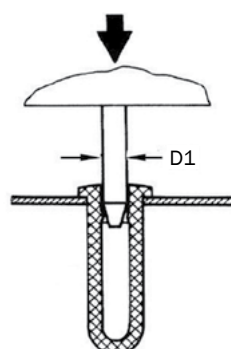
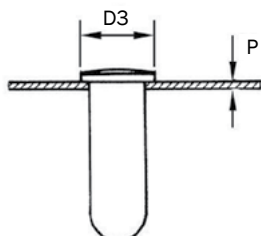
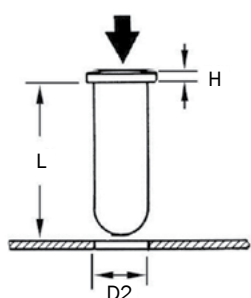
Plastic Friction Bushes

Plastic Friction Bushes are easy to insert from the outside of a panel, making them ideal for blind-fixing applications where badges or name plates need to be retained, with the added advantage of sealing the hole against water entry.

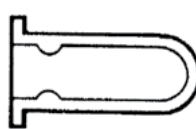
Typical applications include motor vehicles, machines, garden equipment and audio equipment.

Materials - Nylon, Polypropylene.

Typical Colours - Black, Natural.



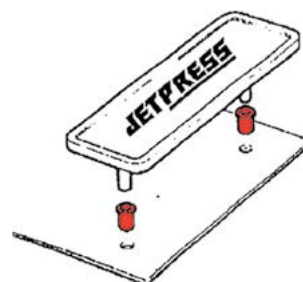
Type 1



Type 2

D1	D2	P	L	H	D3	Type	Part Number
2.4	3.5	1.6	6.5	0.5	4.7	1	PFB057
2.4	4.0	0.9	11.7	0.9	5.2	2	PFB016
3.2	4.3	1.6	6.6	0.5	5.1	1	PFB058
3.2	4.8	0.9	11.7	0.9	6.3	2	PFB059
4.0	5.5	0.9	11.7	0.9	7.1	2	PFB018
6.0	9.0	3.2	10.2	0.6	10.5	1	PFB061
6.4	7.3	1.6	8.4	0.5	9.5	1	PFB062
6.7	8.7	-	13.5	1.0	16.7	2	PFB008

Vist jetpress.com, to see our full range





Arrow Head Quarter Turn Fixings



Type 1



Type 2



Type 3

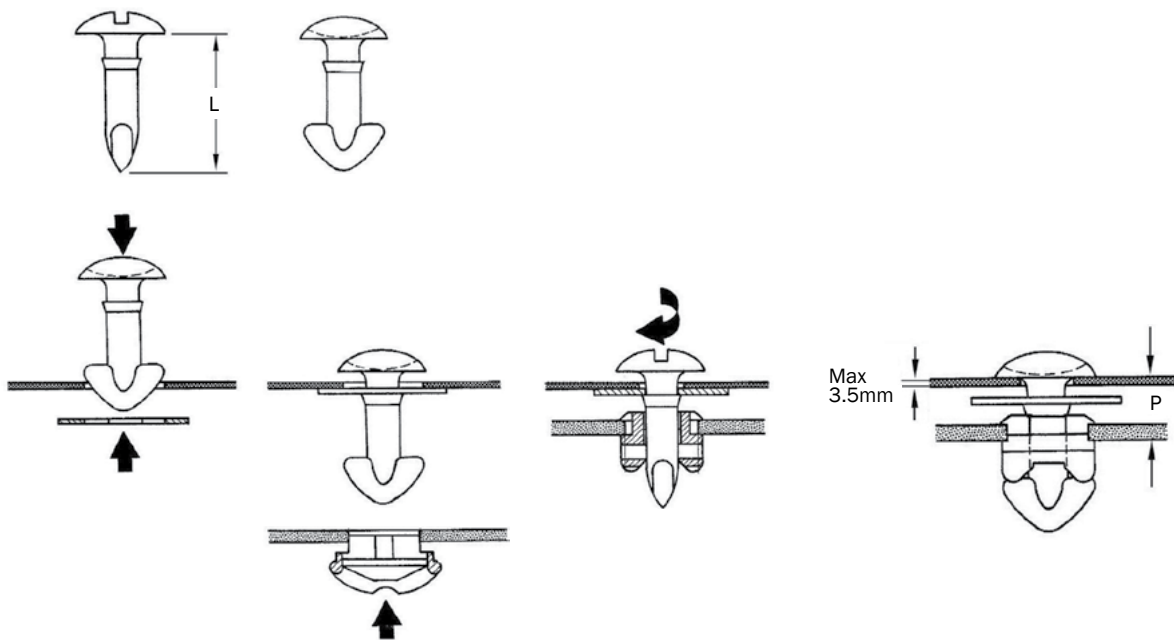
These Arrow Head Quarter Turn Fixings are ideal for use where a quick-release, reusable fastening is required and the Studs are available in various head styles depending on function and preference and assembly is by hand or a screwdriver.

The Quarter Turn Stud is part of a three-piece set, comprising of a Stud, Washer and Cam. The Stud is selected according to the overall thickness of both panels - ensuring that the top panel is no thicker than 3.5mm - and the Cam is selected according to the base panel thickness. The Washer, if required, is used to retain the stud in the top panel. The Washer can also be used where there is a small amount of space between the panel and the stud elbow to ensure the fit is secure. The Washer can be positioned on either side of the panel or carpet being secured.

A quarter turn of the stud closes and releases the assembly so that access can be gained as required.

Typical applications include motor vehicles - to fasten carpets over spare wheels/jack storage area and for access to panels under the bonnet or dashboard, ventilators, heaters and domestic appliances.

Materials - Nylon, Acetal.
Typical Colour - Black.

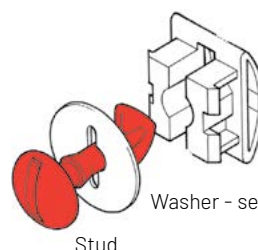


P	L	Type	Part Number
5.6 - 6.4	17.9	2	QTS122
5.6 - 6.4	19.0	3	QTS121
7.6 - 8.4	19.6	1	QTS123
7.6 - 8.4	20.0	2	QTS124

Vist jetpress.com, to see our full range



SCAN ME!



Cam - see page 23

Washer - see page 23

Stud



Cam



Washer

Quarter Turn Cam and Washer

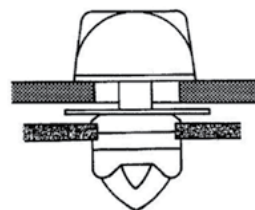
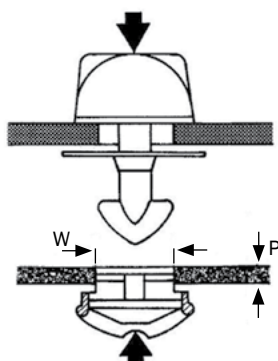
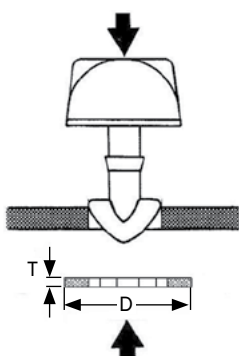
The Cam and Washer are used in conjunction with your choice of Quarter Turn Stud.

The Cam is selected according to the base panel thickness, and the Washer, if required, is used where the Stud needs to be retained in position prior to assembly or to carry out maintenance work.

Typical applications include motor vehicles - to fasten carpets over spare wheels/jack storage area and for access to panels under the bonnet or dashboard, ventilators, heaters and domestic appliances.

Materials - Nylon, Acetal.

Typical Colour - Black.



Cam

P	W	Part Number
1.2	12.6 x 12.6	QTC005
3.3	12.6 x 12.6	QTC007

Vist jetpress.com, to see our full range

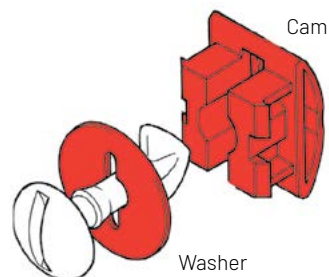
Washer

D	T	Part Number
20.3	1.5	QTW040

Vist jetpress.com, to see our full range



Stud - see page 22



Washer



W-Button



Fir Tree



TPR007

Trim Fasteners - Fir Tree Type

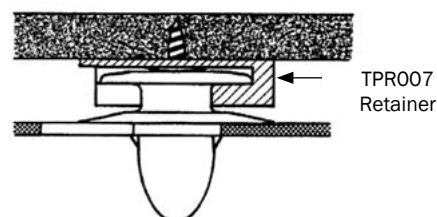
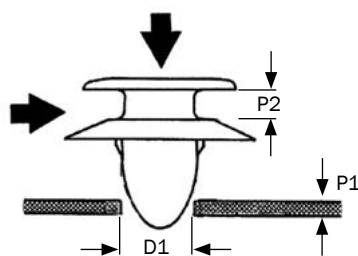
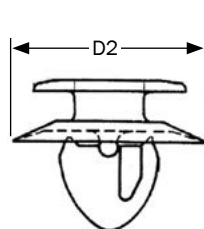
Designed for blind trim fixing applications where occasional removal and refitting is a requirement, these fasteners have a high tolerance of poor hole conditions. Positioned into a keyhole slot within the trim panel (keyhole details available upon request), they are then simply pushed into the fixing hole of the base panel.

Some of these fasteners can also be used with our retainer - TPR007 - when for technical or styling reasons, a keyhole slot is not feasible.

Typical applications include motor vehicles, boats, caravans and coaches.

Materials - Nylon, Acetal.

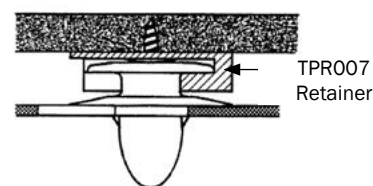
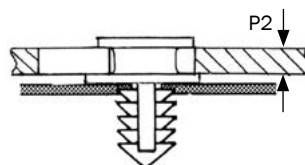
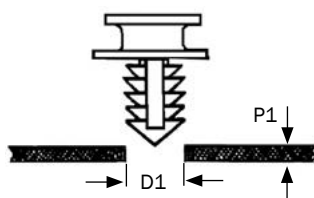
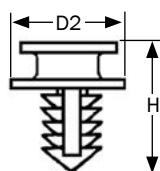
Typical Colours - Black, Natural.



W-Button

D1	P1	P2	D2	Type	Retainer	Part Number
7.5	0.7 - 0.9	2.0	19.0	1	-	TPF052
8.0	0.7 - 0.9	2.5	17.4	1	TPR007	TPF053
8.1	5.0	2.3	15.4	1	TPR007	TPF056
8.1 - 8.4	0.9	2.3	17.5	1	-	TPF054
8.4	0.8	2.0	18.0	1	-	TPF023

Visit jetpress.com, to see our full range



Fir Tree

D1	P1	P2	D2	H	Part Number
6.1	3.7 - 9.2	0.7	16.0	15.6	TPF047
6.1 - 6.5	3.5 - 9.0	3.0	16.0	18.1	TPF050
6.8	1.0 - 5.5	1.5	17.5	15.5	TPF035

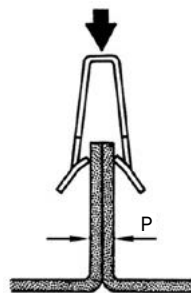
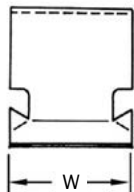
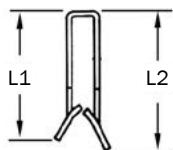


Edge Clips - Standard

These fasteners secure two panels or components to other panels or flanges. Ideal for the assembly of dissimilar metals, fibre and hardboards, wood, hard and soft plastics - even rubber. No drilling or additional screws are needed as the barbs retain the fastener securely in position.

Typical applications include fascia panels, electrical equipment, packaging and telecom equipment.

Material - Austempered Carbon Steel.



P	L1	L2	W	Part Number
0.4 - 1.1	8.7	8.7	12.7	EPF171
0.4 - 1.2	8.7	8.7	15.9	EPF172
0.4 - 2.0	9.4	9.4	12.7	EPF173
0.4 - 2.0	14.3	14.3	12.7	EPF174
0.8 - 2.0	6.4	6.4	38.1	EPF175
0.8 - 2.0	8.0	8.0	12.7	EPF176
0.8 - 2.0	8.7	8.7	12.7	EPF177
1.0 - 2.0	8.7	8.7	12.7	EPF178
1.2 - 2.0	14.3	14.3	12.7	EPF180
1.6 - 2.0	8.7	8.7	6.3	EPF181
1.6 - 2.0	8.7	8.7	12.7	EPF182
1.6 - 2.3	10.0	10.0	13.8	EPF244
1.7 - 3.3	12.5	12.5	12.7	EPF183
2.0 - 2.8	8.7	8.7	12.7	EPF184
2.0 - 2.9	14.0	14.0	12.7	EPF185
2.2 - 3.6	10.7	10.7	12.7	EPF186
2.4 - 3.6	8.7	8.7	12.7	EPF271
2.8 - 3.6	6.4	6.4	12.7	EPF246
2.9 - 3.3	12.5	12.5	12.7	EPF187
3.1 - 3.8	12.7	12.7	12.7	EPF188
3.2 - 5.1	12.7	12.7	12.7	EPF325
3.4 - 3.7	8.7	8.7	12.7	EPF189
3.6 - 4.8	8.7	8.7	12.7	EPF191
4.4 - 4.6	6.3	6.3	8.0	EPF241
4.4 - 5.5	9.9	9.9	12.7	EPF192
4.4 - 5.6	9.3	9.3	12.7	EPF193
4.4 - 5.9	7.1	7.1	12.0	EPF194
5.5 - 6.0	11.1	11.1	12.7	EPF195
6.4 - 7.9	9.9	9.9	12.7	EPF196

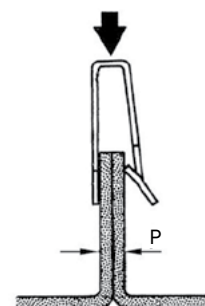
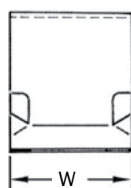
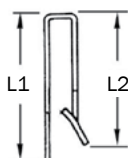


Edge Clips - D Type

A range of robust fasteners designed to secure leather, cloth, soft plastics, fabrics, rigid plastic or fibreboard panels to metal. Barbs retain the assembly securely in position on one side whilst the flat side provides a neat flush appearance on the other.

Typical applications include motor vehicles, furniture, seating and toys.

Material - Austempered Carbon Steel.

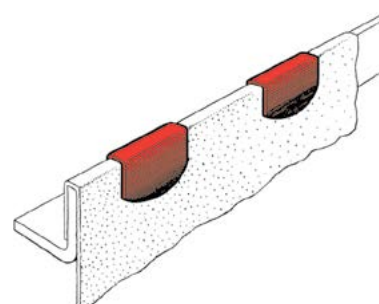


P	L1	L2	W	Part Number
0.6 - 1.2	8.7	8.7	12.7	EPF198
1.0 - 1.6	8.7	8.7	12.7	EPF199
1.0 - 3.6	11.0	11.0	12.7	EPF200
1.4 - 1.9	10.3	8.7	12.7	EPF201
1.7 - 2.0	12.5	10.5	15.0	EPF243
1.8 - 2.4	8.7	8.7	12.7	EPF202
1.8 - 3.2	12.7	12.7	12.7	EPF203
2.2 - 3.2	8.7	8.7	12.7	EPF204
2.6 - 2.8	7.9	7.9	12.7	EPF272
3.0 - 3.4	7.6	7.6	12.7	EPF245
3.4 - 4.0	12.7	8.7	12.7	EPF205
3.4 - 4.2	11.4	11.4	12.7	EPF273
4.6 - 5.1	10.3	10.3	12.7	EPF206
5.4 - 5.6	14.3	10.3	12.7	EPF207

Vist jetpress.com, to see our full range



SCAN
ME!



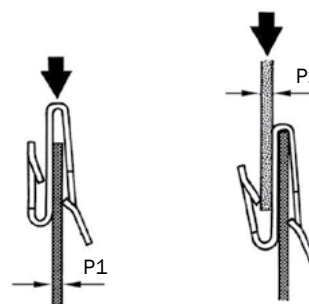
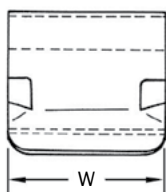
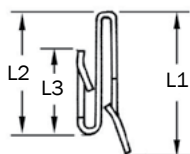


Edge Clips - S Type

This practical range of fasteners is designed to hold metal, fibreboard or rigid plastic sheet material at 180° either to other metal panels or to each other. The barbs hold the clip securely in place thus eliminating the need for holes and screws.

Typical applications include domestic appliances, motor vehicles, furniture, panelling, packaging, telecom equipment and electrical equipment.

Material - Austempered Carbon Steel.



Non-Removable

P1	P2	L1	L2	L3	W	Part Number
0.2 - 1.2	1.8 - 2.0	11.9	11.9	11.5	12.7	EPF228
0.4 - 0.5	0.4 - 0.5	6.9	9.9	11.4	12.7	EPF208
0.5 - 1.2	0.5 - 1.2	7.9	8.3	7.9	12.7	EPF209
0.5 - 1.2	0.5 - 1.2	9.7	12.7	9.7	12.7	EPF210
0.6 - 1.2	0.6 - 1.2	11.2	11.2	11.2	12.7	EPF276
0.6 - 1.2	0.9 - 2.0	15.1	15.1	11.5	12.7	EPF249
0.7 - 1.2	0.7 - 1.2	9.9	9.9	9.9	12.7	EPF211
0.9 - 2.1	1.8 - 3.1	9.9	9.9	9.9	12.7	EPF212
1.0 - 2.0	1.4 - 2.0	8.7	8.7	8.7	12.7	EPF213
1.5 - 2.4	2.6 - 3.2	11.9	11.9	11.9	12.7	EPF214

Vist jetpress.com, to see our full range

Removable

P1	P2	L1	L2	L3	W	Part Number
0.5 - 1.1	1.0 - 1.2	7.9	8.7	7.9	15.9	EPF221
0.8	1.6	7.7	7.7	7.8	16.0	EPF220
0.8 - 1.6	2.7	8.0	8.0	8.0	12.7	EPF251
1.0 - 1.6	1.3 - 1.6	11.0	11.0	11.0	18.0	EPF256
1.2	1.8	10.4	13.0	13.0	12.7	EPF254
1.2 - 1.8	0.5 - 1.6	13.0	11.0	11.0	12.0	EPF216
2.2 - 2.8	1.6	10.3	10.3	9.5	12.7	EPF277

Vist jetpress.com, to see our full range





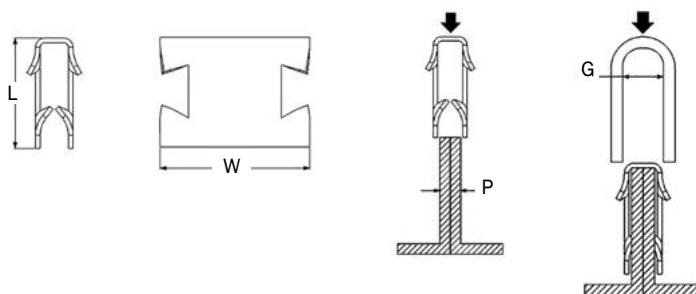
Edge Clips - Extrusion Mounting

Extrusion Mounting Edge Panel Clips have a dual function. They can be used as a standard edge panel fastener, where the internal barbs can be used to fix two sheets of metal or plastic together. Outward-facing barbs provide a secondary function as a fixing for any extruded channel section or covering trim. This trim can be used to neat the joint, protecting the user from sharp edges or preventing ingress of dirt into the joint where hygiene is important.



Typical applications for this edge clip include fascia panels, electrical equipment, packaging and telecom equipment.

Material - Austempered Carbon Steel.



P	L	W	G	Part Number
0.4 - 1.0	6.0	12.7	3.6	EPF326
0.4 - 2.0	9.5	12.7	4.2	EPF163
1.4 - 2.0	9.5	12.7	5.2	EPF340
2.0	14.0	16.0	4.0 - 5.2	EPF327
2.5 - 3.0	9.9	12.7	4.5 - 5.5	EPF356

Fascia/Trim Clips - Headed

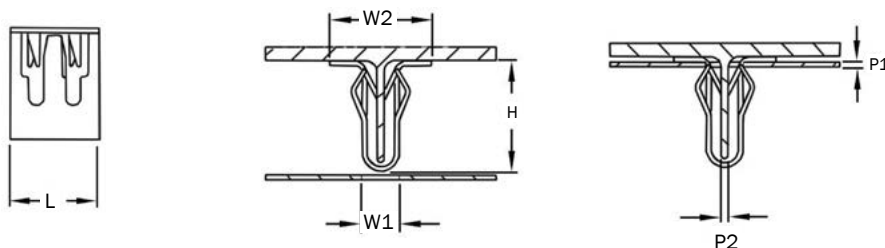


Designed for use on rectangular studs or integrally moulded ribs on any lightweight application where removability is desired, they provide a snug, rattle-free installation, yet will yield to deliberate removal force when required.

To facilitate removal or replacement, these Trim Panel Clips have barbs which enable them to remain on the trim panel but disengage from the base panel.

Typical applications include fascias, domestic appliances and motor vehicles.

Material - Austempered Carbon Steel.



P1	P2	W1	W2	L	H	Part Number
0.7	1.5	6.0	14.0	12.0	15.1	EPF155

Vist jetpress.com, to see our full range



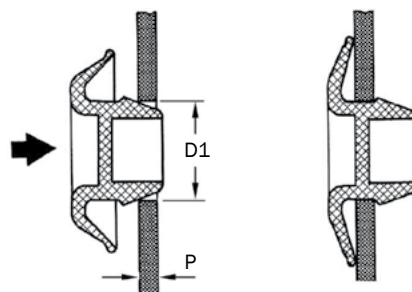
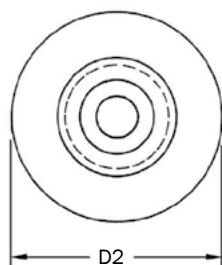
Plug Buttons - Self-Sealing

Self-Sealing Plug Buttons snap into round holes without the use of special tools. They can be removed and re-used if required and are ideal for use in oily or greasy environments.

Typical applications include motor vehicles, domestic appliances, electrical equipment and telecom equipment.

Material - Polythene.

Typical Colours - Black, Natural.



D1	P	D2	H	Part Number
12.7	0.9 - 1.5	23.8	9.1	PLB088
11.1	0.9 - 1.5	21.4	9.1	PLB076
13.5	0.9 - 1.5	23.8	9.1	PLB165
19.1	0.9 - 1.5	31.0	9.1	PLB091
22.2	0.9 - 1.5	32.5	9.1	PLB163
31.8	0.9 - 1.5	42.0	9.1	PLB094
38.1	0.9 - 1.5	48.4	9.1	PLB095

Vist jetpress.com, to see our full range



SCAN
ME!





Plastic Rivets - Expansion Type

These one-piece Expansion Rivets can be used for fitting components or securing plastic or metal panels and are ideal in situations where the work area is only accessible from one side.

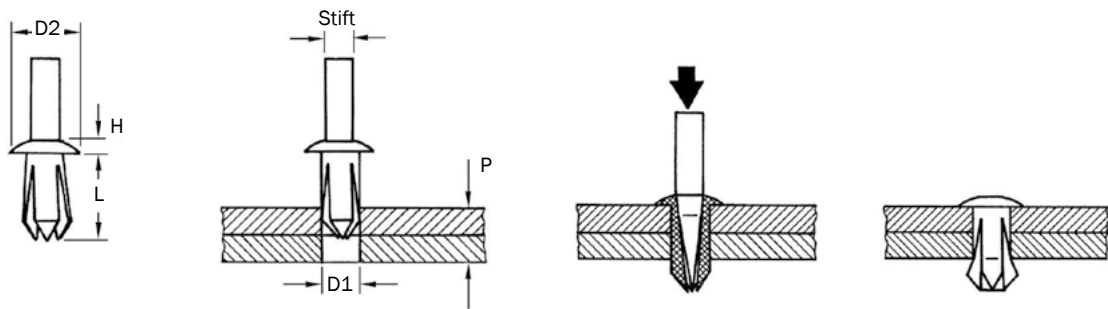
The Rivet expands in the hole as the drive pin is pushed inwards, locking the assembly firmly into place. These fasteners are best fitted using our Manual Insertion Tools.

* Pre-driven Expansion Rivets have the pin partially driven into the body of the Rivet to aid assembly.

Typical applications include telecom equipment, motor vehicles, domestic appliances, furniture and electrical equipment.

Material - Nylon.

Typical Colours - Black, Natural, White.



D1	P	D2	H	L	Pin	Part Number
3.9 - 4.2	3.9 - 6.4	6.4	1.3	8.2	2.4	DRR054*
4.0 - 4.2	4.0 - 6.4	7.6	1.3	8.7	2.5	DRR006*
4.8 - 5.4	1.6 - 4.8	7.1	1.9	7.5	2.9	DRR007*
4.8 - 5.4	1.6 - 4.8	11.0	2.0	7.5	3.0	DRR108*
4.8 - 5.4	4.0 - 8.7	7.1	1.2	11.2	3.0	DRR011*
5.5 - 6.3	2.4 - 8.0	9.5	2.0	11.9	3.1	DRR012*
5.5 - 6.5	2.4 - 7.9	9.5	2.0	11.9	3.2	DRR058
6.4 - 6.9	5.5 - 9.5	11.0	2.0	12.3	4.0	DRR114

Vist jetpress.com, to see our full range





Male



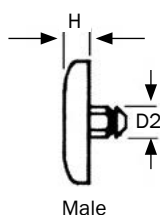
Female

Mini Rivets

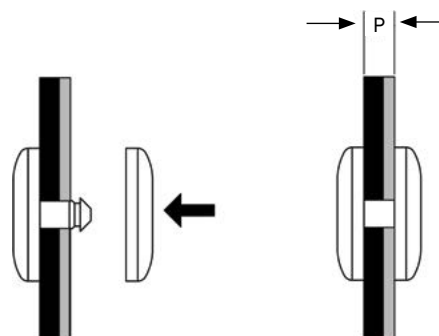
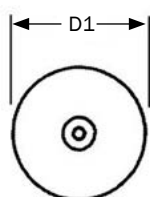
Mini Rivets are light-duty two-piece fasteners consisting of a male and female component which are pushed together for quick and easy fitting. They are ideal for applications such as securing signs and panels, in both rigid and compressible materials.

Typical applications include colour swatches, display folders, paper, card and plastic folders.

Material - Nylon.
Typical Colour - Natural.



Male



D1	P	D2	H	Use with Female	Part Number
6.4	0.4	1.5	1.3	SNR007A	SNR002
6.4	0.8	1.5	1.3	SNR007A	SNR003A

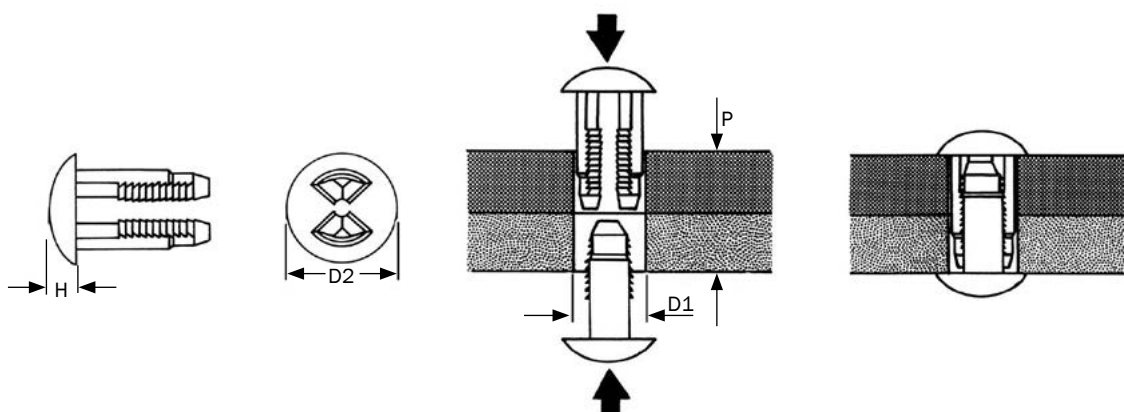


Plastic Rivets - Ratchet Type

Ratchet Type Rivets are unique fasteners consisting of two identical parts. During assembly, these two parts are simply pushed together forming a secure and tamper-proof fixing, typically of two panels.

Typical applications include motor vehicles, domestic appliances, audio equipment and furniture.

Material - Nylon.
Typical Colours - Natural, Black.



D2	P	D1	H	Part Number
10.3	5.7 - 8.7	7.1	2.3	RAT007
10.3	19.8 - 34.9	7.1	1.6	RAT020
19.1	8.8 - 12.7	7.1	2.4	RAT023

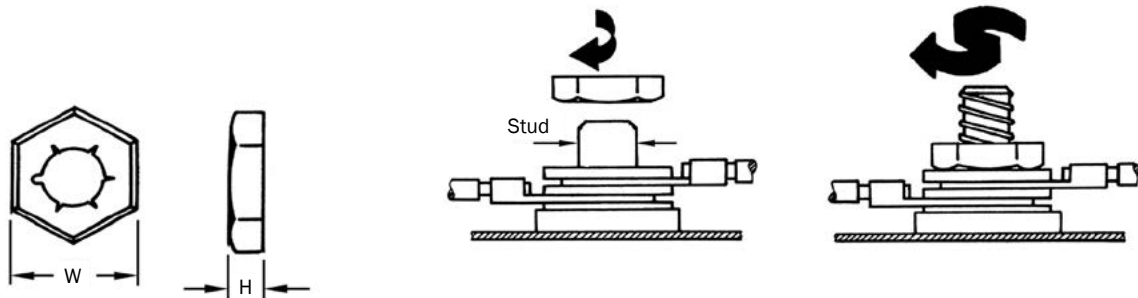


Self-Threading Nuts - Regular Type

These Self-Threading Nuts form their own thread on plastic, die cast or mild steel studs. The thread-forming displaces material without producing swarf. They are removable and reusable. Self Threading Nuts have a low height and small exterior dimensions so they are ideal where space is restricted. Where there is insufficient clearance for standard tools, a special internal hex wrench can be used.

Typical applications include conveyors, plastic bosses, toys, motor vehicles, domestic appliances and audio equipment.

Material - Austempered Carbon Steel.



Stud	W	H	Part Number
5.0	10.0	2.8	STN028

Standard Screw Grommets



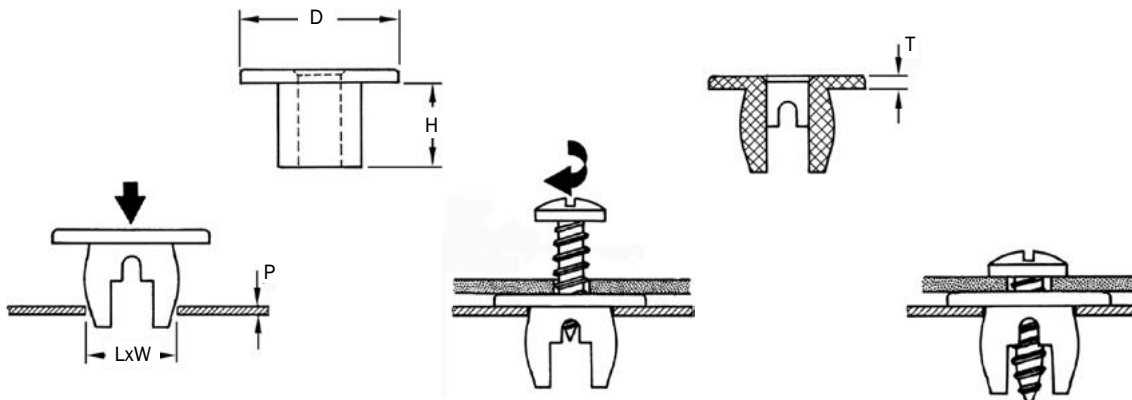
Screw Grommets are ideal for use in high-corrosion environments. Various forms of head are available which provide a choice of stand-off distances between panels.

Used in conjunction with a self-tapping screw, they enable panels or components to be securely fastened.

Typical applications include panel builders, domestic appliances, motor vehicles, furniture, boats and electrical equipment.

Material - Nylon.

Typical Colours - Natural, Black.



Screw	Size	P	L X W	T	H	D	Part Number
8	ST 4.2	0.5 - 4.0	7.0 x 7.0	1.0	8.0	9.3	CAN082
8 - 10	ST 4.2 - 4.8	0.8 - 2.4	6.9 x 6.9	0.8	7.1	12.7	CAN079
12 - 14	ST 5.5 - 6.3	0.9	9.5 x 9.5	1.6	7.1	15.9	CAN107



Screw Grommets - Stand-Off Head

These Captive Nuts work in the same way as our Standard Captive Nuts but are offered with a range of stand-off heads.

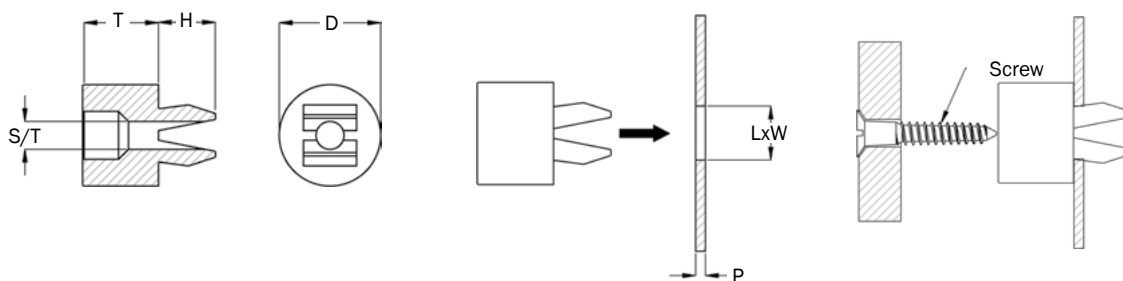
Used in conjunction with a self-tapping screw, they enable panels or components to be securely fastened whilst maintaining a constant gap between the two panels.

Screw sizes are shown in the table below in both imperial and metric (ST) form.

Typical applications include vehicle fascias and trims, electrical circuit boards and domestic appliances.

Material - Nylon.

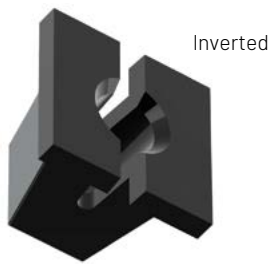
Typical Colours - Natural, Black.



Screw	Size	P	L X W	T	H	D	Part Number
8	ST 4.2	0.8 - 2.4	6.9 x 6.9	6.0	7.1	12.7	CAN171
8	ST 4.2	0.8 - 2.4	6.9 x 6.9	9.5	7.1	12.7	CAN172
8	ST 4.2	0.8 - 2.4	6.9 x 6.9	13.0	7.1	12.7	CAN173
8	ST 4.2	0.8 - 2.4	6.9 x 6.9	15.9	7.1	12.7	CAN174
8	ST 4.2	0.8 - 2.4	6.9 x 6.9	17.5	7.1	12.7	CAN175
10	ST 4.8	0.8 - 2.4	6.9 x 6.9	6.0	7.1	12.7	CAN188
10	ST 4.8	0.8 - 2.4	6.9 x 6.9	6.4	7.1	12.7	CAN177
10	ST 4.8	0.8 - 2.4	6.9 x 6.9	7.1	7.1	12.7	CAN178
10	ST 4.8	0.8 - 2.4	6.9 x 6.9	9.5	7.1	12.7	CAN179
10	ST 4.8	0.8 - 2.4	6.9 x 6.9	10.3	7.1	12.7	CAN180
10	ST 4.8	0.8 - 2.4	6.9 x 6.9	12.7	7.1	12.7	CAN181
10	ST 4.2	0.8 - 2.4	6.9 x 6.9	17.5	7.1	12.7	CAN182
10	ST 4.2	0.8 - 2.4	6.9 x 6.9	19.0	7.1	12.7	CAN183
10	ST 4.8	0.8 - 2.4	6.9 x 6.9	21.4	7.1	12.7	CAN184
10	ST 4.8	0.8 - 2.4	6.9 x 6.9	23.4	7.1	12.7	CAN185
10	ST 4.8	0.8 - 2.4	6.9 x 6.9	25.4	7.1	12.7	CAN186
10	ST 4.8	0.8 - 2.4	6.9 x 6.9	27.8	7.1	12.7	CAN187

Vist jetpress.com, to see our full range





Inverted



Closed End

Screw Grommets

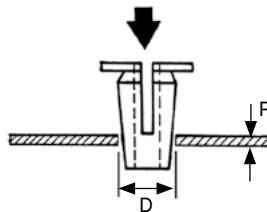
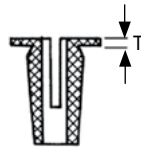
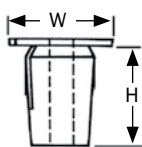
Screw Grommets are ideal for use in high-corrosion environments. Various forms of head are available which provide a choice of stand-off distances between panels.

Used in conjunction with a self-tapping screw, they enable panels or components to be securely fastened.

Typical applications include panel builders, domestic appliances, motor vehicles, furniture, boats and electrical equipment.

Material - Nylon.

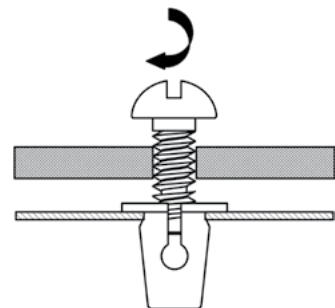
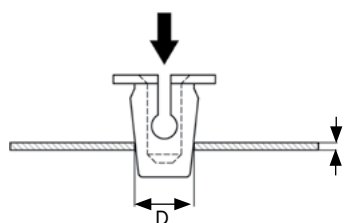
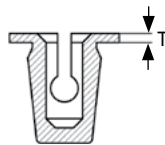
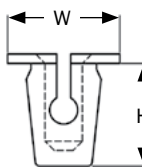
Typical Colours - Natural, Black.



Inverted

Screw	Size	P	D	T	H	W	Part Number
8 - 10	ST 4.2 - 4.8	0.9 - 1.0	9.5 x 9.5	2.0	10.0	15.0 x 15.0	CAN122
10	ST 4.8	1.5	9.5 x 9.5	2.0	10.0	15.0 x 15.0	CAN115
14	ST 6.3	0.9 - 1.0	9.5 x 9.5	2.0	9.9	15.1 x 15.1	CAN121

Vist jetpress.com, to see our full range



Closed End

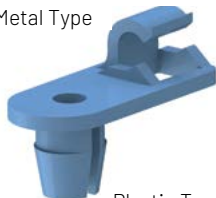
Screw	Size	P	D	T	H	W	Part Number
8	ST 4.2	0.5 - 2.3	7.1 x 7.1	0.9	13.7	9.5 x 9.5	CAN117
10	ST 4.8	0.8 - 1.6	9.4 x 9.4	1.1	18.2	12.3 x 12.3	CAN203

Vist jetpress.com, to see our full range





Metal Type



Plastic Type

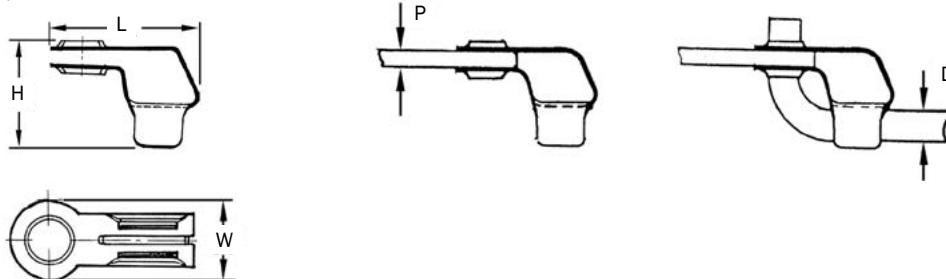
Linkage Clips - Metal and Plastic

These one-piece Linkage Clips provide a quick and easy method of attaching rods used for motion transfer, such as throttle and door linkages. They can be removed for servicing and are reusable.

Various types are available, please contact our sales office for further information.

Typical applications include heating equipment, ventilators, furniture controls, domestic appliances and motor vehicle controls.

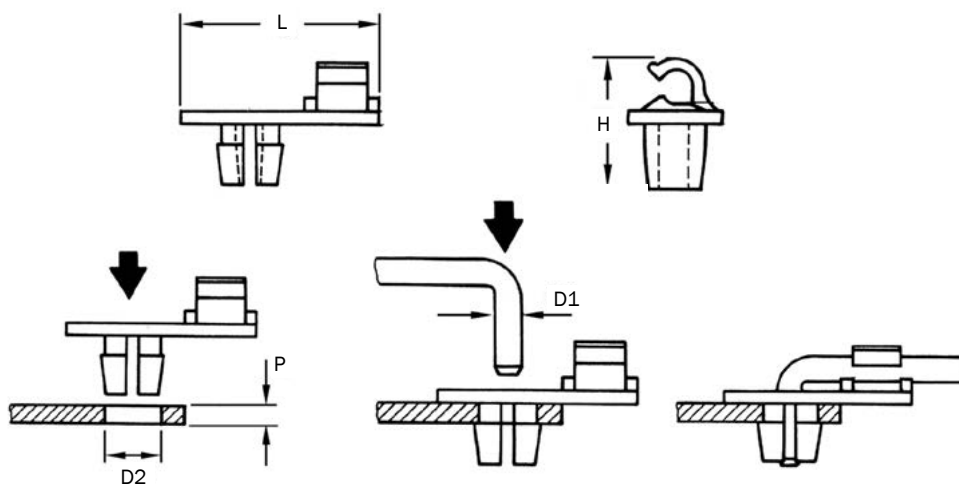
Material - Austempered Carbon Steel.



Metal

D	P	L	H	W	Part Number
4.8	4.1	21.0	16.0	9.5	LIC030
6.4	3.2	26.2	18.0	12.7	LIC031

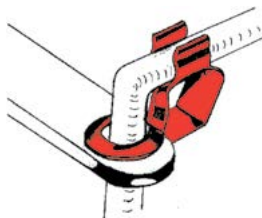
Vist jetpress.com, to see our full range



Plastic

D1	D2	P	H	L	Part Number
4.0	5.9 - 6.2	2.0	13.3	22.6	LIC033

Vist jetpress.com, to see our full range





Door Latches and Striker



Latch



Striker

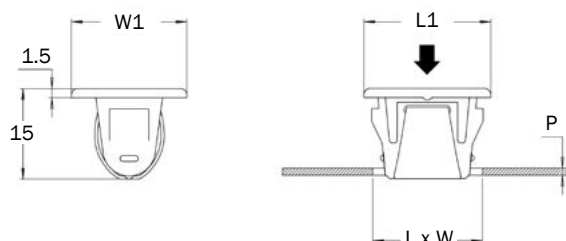
These Door Latches and Striker are suitable for metal cabinet doors and access panels. The latches fix in place through the panel front and as they are manufactured in durable plastic, they provide a smooth, quiet and long-life operation. This product range has been tailored to suit a range of panel thickness, 2 different bezel sizes and with a variety of opening and closing pressures.

F1 = Pull-out Load for the Door Striker in Newtons when used with the Door Striker - STR001A

At higher temperatures, pull-out loads are affected. Maximum working temperature is 100°C.

Materials - Acetal and Spring Steel (Latch), Nylon 66 (Striker).

Typical Colours - Natural, Black.



Latch

P	L X W	L1	W1	F1	Pat Number
0.9 - 1.5	13.1 x 16.8	20.0	18.0	17**	LAT174
0.9 - 1.5	13.1 x 16.8	20.0	18.0	25	LAT175
0.9 - 1.5	13.1 x 16.8	20.0	18.0	45	LAT176
0.9 - 1.5	13.1 x 16.8	21.0	19.0	17**	LAT180
0.9 - 1.5	13.1 x 16.8	21.0	19.0	25	LAT181
0.9 - 1.5	13.1 x 16.8	21.0	19.0	45	LAT182
1.7 - 2.0	13.1 x 16.8	21.0	19.0	17**	LAT177
1.7 - 2.0	13.1 x 16.8	20.0	18.0	25	LAT178
1.7 - 2.0	13.1 x 16.8	20.0	18.0	45	LAT179
1.7 - 2.0	13.1 x 16.8	21.0	19.0	17**	LAT183
1.7 - 2.0	13.1 x 16.8	21.0	19.0	25	LAT184
1.7 - 2.0	13.1 x 16.8	21.0	19.0	45	LAT185

Striker

L X W	P	Part Number
6.7 x 7.4	0.5 - 1.0	STR001A



Hexagonal Base Levelling Feet

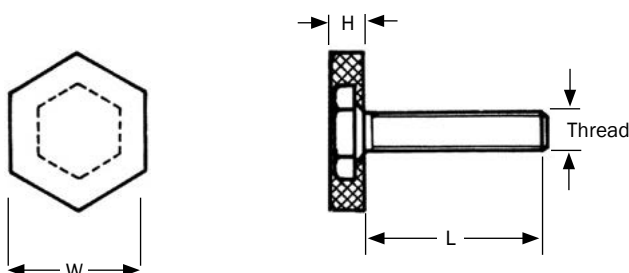
Ideal for levelling domestic appliances and other level-sensitive equipment, these rigid feet can also be used to make height and level adjustments on kitchen units, DIY furniture, etc.

Adjustment can be done with a spanner or screwdriver.

Typical applications include furniture, domestic appliances, kitchen units, industrial units, fridges and cookers.

Materials - Mild Steel (Stud), Polyethylene Grade Plastic (Base).

Typical Colours - Black, Natural.



Thread	L	W	H	Part Number
M8	30	30.0	10.8	ADF017
M8	40	30.0	10.8	ADF018



Removable Knob Clips

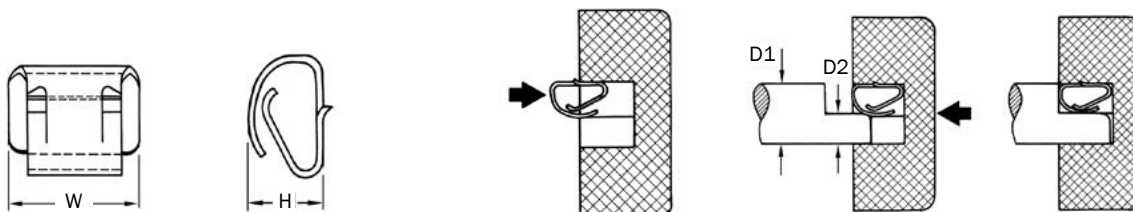
These popular lightweight removable Knob Clips are designed to fasten moulded door knobs or rotary switches to shafts.

The Knob Clips are assembled to the shaft and the complete assembly is then pushed into the moulding. The knob can be removed from the shaft for servicing or when access is necessary.

Typical applications include the fixing of knobs for domestic appliances and electric control panels.

F = Maximum Pull-off force in Kg.

Material - Austempered Carbon Steel.



D1	D2	H	W	F	Part Number
4.7	4.0	4.3	6.4	5	RKC003
5.5 - 7.1	4.8	4.2	8.3	6	RKC005
5.9	3.9	4.2	8.3	4	RKC004
6.3	5.5	4.2	8.3	9	RKC006



Plastic Adjuster Buckles

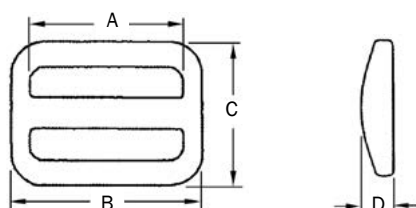
These Adjusters are designed to provide length adjustment on strap assemblies. They are most often used on luggage and sports bags and grip webbing securely and tightly.

Typical applications include sports bags, holdalls and ruck sacks.

W = Webbing / Fabric Width.

Material - Acetal.

Typical Colour - Black.



W	A	B	C	D	Part Number
20.0	20.7	27.0	21.0	6.0	ADS010
25.0	25.5	32.0	20.8	6.0	ADS011

Vist jetpress.com, to see our full range



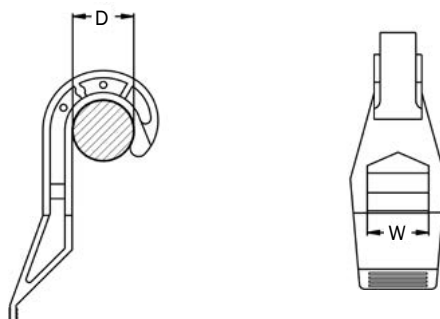
Roll Cage Hooks

These Trolley Hooks are designed to be used in conjunction with suitable webbing straps on roll cages, shopping trolleys etc. We offer a range of sizes to suit the standard trolley handle or roll cage frame including 1" square bar section.

Should you require, we can offer these products complete with webbing straps, buckles and adjusters as a finished strap and hook assembly.

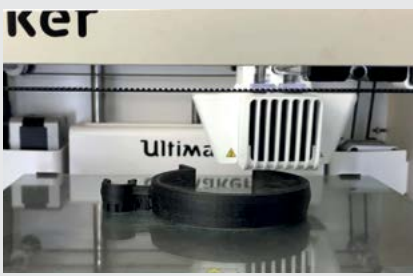
Material - Nylon 66.

Typical Colour - Black.

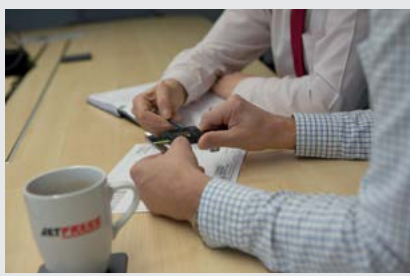


Description	D	W	Part Number
3/4" Round	19.0	25.0	RCH001
1" Round	25.4	25.0	RCH003
1" Square	25.4 x 25.4	25.0	RCH004

Vist jetpress.com, to see our full range

**Bespoke Development**

Our CAD and 3D printing capabilities can help you design and produce a bespoke solution to your specific requirements. We have manufacturing capabilities within the **JET PRESS** group and proven global manufacturing partners to offer you bespoke products.

**Specialist Engineers**

Our specialist engineers combine their practical industry experience and knowledge to identify solutions that are cost-effective for your applications.

**CAD**

We provide complimentary CAD downloads for a wide range of our fasteners and components. Whether you're working on a small project or a large-scale production, you can easily access and integrate our CAD files into your designs.

**Samples**

For most small fasteners and components, free-of-charge samples can be supplied from stock. Bespoke samples are available from our in-house 3D printing.

**Kits & Assemblies**

JET PRESS has the facilities to put together various products, ensuring correct and hassle-free assembly. We make kits on request - from furniture flat-pack kits to production kits.

**Special Packaging**

JET PRESS can provide packaging to suit individual requirements including blank boxes, your boxes or bins and bagging in small quantities.

**Warehousing**

We hold a vast array of products in stock to ensure supply and we guarantee the best prices to our customers through bulk purchasing. We can hold stock specifically for your large volume, scheduled requirements.

**Consignment Stock**

We can manage our stock on your premises. We will monitor and replenish stock levels and only invoice you for the parts as you use them.

**Global Sourcing**

Our product and global sourcing expertise and knowledge, that has been built-up over decades, allows our technical specialists to provide you with existing or new solutions to fulfil your requirements. If the part you need exists outside our standard ranges, we'll find it for you.

